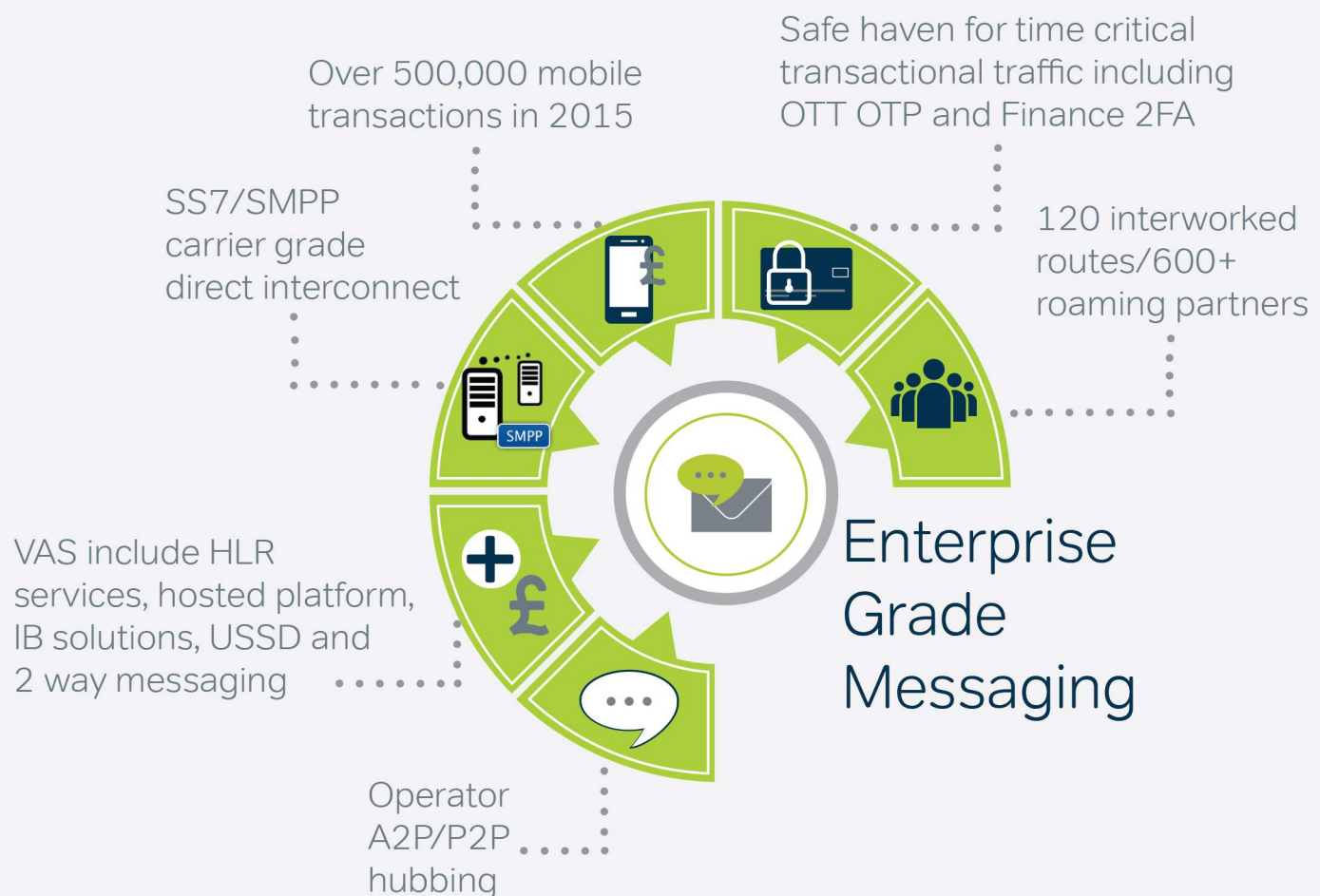


Messaging Solutions

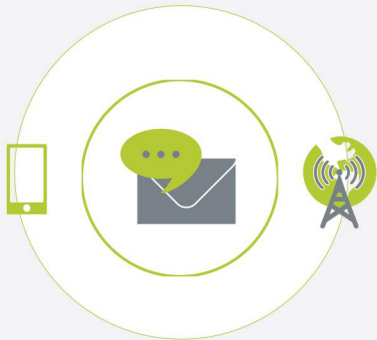
The Operator of Operators for A2P Messaging Services

JT Wholesale is a pioneer of the messaging industry, with over 600 direct operator connections which enable us to offer excellent quality routing via our carrier-grade high availability network. This combined with great service puts JT Wholesale at the leading edge of the global A2P and P2P mobile messaging market.

SMPP, SS7 and Sigtran connectivity is available depending on the type of messaging solution you require. Our in-house SMS routing platform ensures optimal delivery with minimal latency.



Service and Solutions



JT Wholesale
Messaging Solutions



Developer SMS



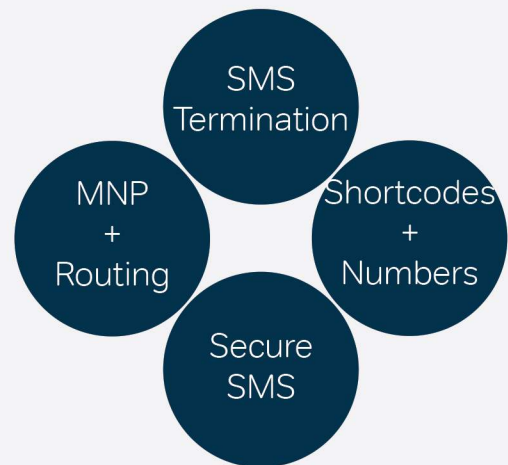
Enabled SMS



Enterprise SMS

Customer Market

Service/Solutions



Global Market Leader



Member of the MEF
Future of Messaging
Programme



Industry pioneer since
the early 2000s



Ranked 7th in Global A2P
Vendor Performance
Report (Rocco – 2016)



Client base of the
world's largest mobile
messaging providers



Operator Development Team
driving A2P market awareness
and understanding